



**Notes**  
 The Contractor is to check all dimensions and conditions on site before commencing. Do not scale from this drawing.  
 This drawing remains the copyright of POZZONI Architecture Ltd.

Scale Bars TO BE USED ONLY AS GUIDANCE

1:100	mm	0	1000	2000	3000	4000	5000
1:200	mm	0	1000	2000	3000	4000	5000
1:500	m	0	10	20	30	40	50
1:1250	m	0	10	20	30	40	50

**SCHEME SUMMARY**

**BLOCK A (PHASE 1 - APPROVED):**

21 x 1 Bedroom Apartments  
 17 x 2 Bedroom Apartments  
 TOTAL = 38 Apartments

**BLOCK B (PHASE 2 - RESERVED MATTERS):**

3 x 1 Bedroom Apartments  
 9 x 2 Bedroom Apartments  
 TOTAL = 12 Apartments

**BLOCK C (PHASE 2 - RESERVED MATTERS):**

6 x 2 Bedroom Apartments  
 TOTAL = 6 Apartments

**PARKING PROVISION**

Block A - 17 spaces  
 Blocks B & C - 15 spaces

**CYCLE STORAGE**

Shared covered store for 20 bicycles

**MATERIALS (RESERVED MATTERS)**

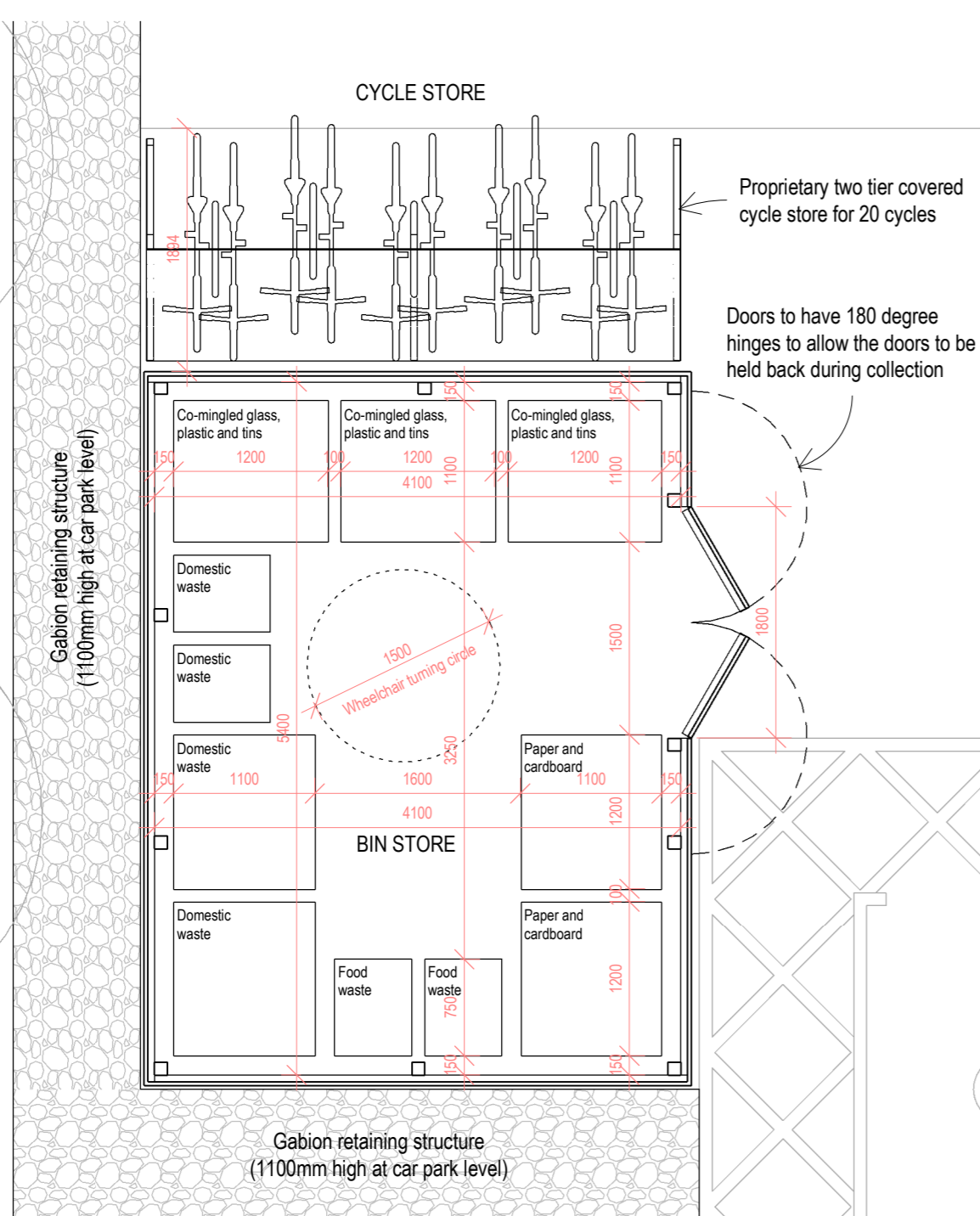
**APARTMENTS:**

1. Walls - Brick, multi red to match Phase 1. Areas of feature brickwork to be Flemish bond in the same red multi brick
2. Roof - Artificial slate effect tile
3. Windows & Patio Doors - UPVC, grey
4. Apartment entrance door - Aluminium, grey
5. Balcony balustrade - polyester powder coated metal guarding, grey

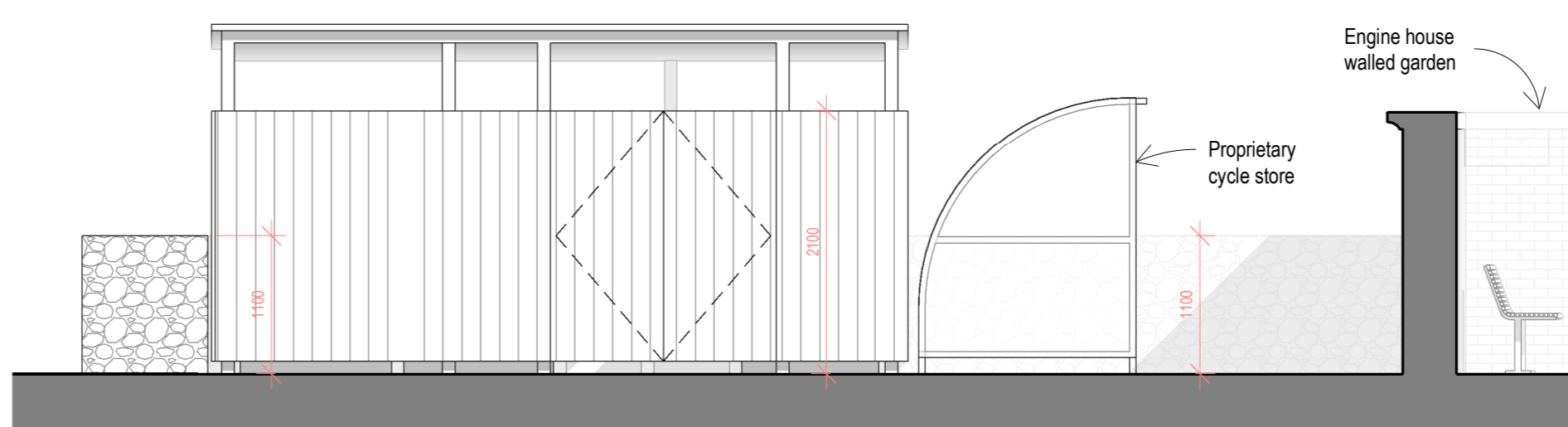
**HARD LANDSCAPING & BOUNDARIES:**

6. Car Park and Parking bays - Macadam, black
7. Pathways within the site - Resin bonded gravel on a tarmac base, golden in colour for the main pathways and grey for the shadow effect within the engine house garden
8. Railings - Polyester powder coated metal, black
9. Bin store - treated timber clad structure with metal roof

**PROPOSED SITE LAYOUT PLAN**  
1 : 200



**BOUNDARY TYPE A ELEVATION**  
1 : 50



**BIN & CYCLE STORE ELEVATION**  
1 : 50

Rev	Description	EMc	By	Date
A	Cycle storage provision clarified	EMc		10/05/18

Client: MOSSCARE ST VINCENTS' HOUSING GROUP  
 Job: CASTLE STREET PHASE 2, STALYBRIDGE  
 Drawing: PROPOSED SITE PLAN  
 Ref: 4654-01\_1002  
 Scale: As indicated  
 Date: 07/12/17  
 Approved: TW  
 Design: Contract As Built

**pozzoni**

London House 115 Golden Lane London EC1Y 0TJ  
 Woodville House 2 Woodville Road Altrincham WA14 2FH  
 +44 20 7078 0079 architects@pozzoni.co.uk  
 +44 161 928 7848 www.pozzoni.co.uk